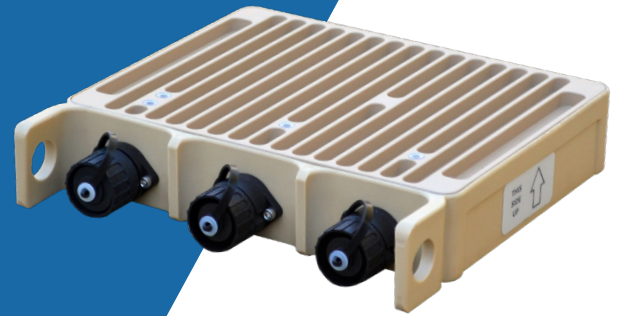


# MAN PORTABLE POWER SYSTEM

## MOBILE SOLAR POWER AND POWER MANAGEMENT SOLUTION

- Distribute power from multiple input types
- Supports mixed battery chemistries and mixed state-of-charge



**“WE STAYED OUT FOR THREE WEEKS AND WE DIDN'T NEED A BATTERY RESUPPLY ONCE.”**

1st Lt. J. Patterson, Platoon Commander, USMC, Afghanistan

### POWER ANYWHERE

The uninterruptible power management and distribution system converts solar and tactical power sources to support combat operations and 12/24 VDC commercial accessories.

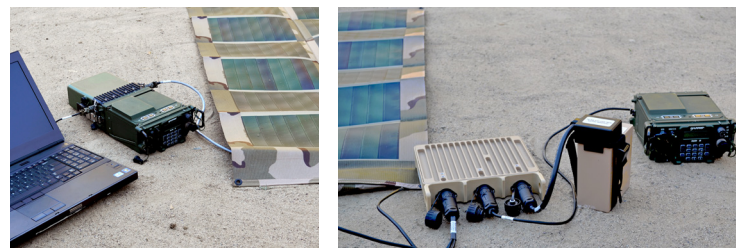
With up to 600 W output, the system delivers power where and when you need it. The portable power can be used to charge batteries, operate communications equipment and run small electronic accessories in tactical and remote environments.

The power module can receive power from a variety of sources including flexible solar panels, rigid panels, BB-XX90 and zinc-air batteries, fuel cells, or vehicles.

The incoming power can then be utilized to charge multiple BB-XX90 style and 12/24 V lead-acid batteries, and distributed to operate tactical equipment. Additional components are available to further expand the uses of the system.

**“IT'S VERY DURABLE, VERY LIGHT,  
AND USER-FRIENDLY.”**

Sgt. T. Clark, Communications Instructor, USMC



Power module charging 24 V lead-acid battery array using power from Sanyo 220W rigid solar panels. Additional example configuration shown.

## MAN PORTABLE POWER SYSTEM MOBILE SOLAR POWER AND POWER MANAGEMENT SOLUTION

### EASY TO USE AND FIELD PROVEN

The plug-and-play system can be set up and ready for use in less than a minute. The power module is easy to pack and transport, weighing only 2.6 pounds with a footprint of 8 x 8 x 1.6 inches.

Iris Technology’s Man Portable Power System has been deployed successfully throughout the world, including Afghanistan and Iraq with the United States Marine Corps as part of the DoD SPACES Program of Record.

### PHYSICAL AND ELECTRICAL PROPERTIES

PARAMETER	CHARACTERISTIC
Weight	2.6 lbs (1.2 kg)
Size	8.0"(20 cm) x 8.0"(20 cm) x 1.6"(4.1 cm)
Output Connectors	PN: C016-20C003-200-12
Environmental	PN: C016-30G006-200-12
Operating Temperature Range	-4° to +131°F (-20° to +55°C)
Storage Temperature Range	-59° to +160°F (-50° to +71°C)
Input Voltage Range	9–70 VDC
Input Current	19 Amps (max)
Input Power	660 W (max)
Output Voltage	12–32 VDC with Iris Technology Smart Cable
Output Power	300 W per Port, 600 W (max)
Efficiency	96% typical
Li Ion Battery Charge Time	1.8 hours typical

